

# Radiator Lockshield Valve Type L for Solering

**Simplex**

Only allow work on heating water systems to be performed by qualified personnel and in accordance with the respective applicable regulations, guidelines and rules of engineering.

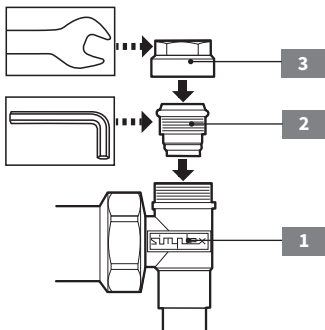
**Refer in particular to:**

**DIN 18 380:** Heating systems and central hot water supply systems

**VDI 2035:** Scale formation in domestic water heating systems and water heating systems

**BGV:** German Professional Association Regulations  
(accident prevention regulations)





Before the soldering, the screwing and the spindle must be dismantled from the enclosure in order to avoid damages of the seals due to the heat. Do not start mounting before the casing has cooled down completely.

- Remove the spindle **2** and solder the casing **1**  
(In case of a nickel-plated version, only soft-soldering is permitted)
- Lubricate the spindle **2** with an acid-free and hot water-resistant grease.
- Turn the spindle **2** until reaching the stop using an Allen key 8 mm. (Do not start mounting before the casing has cooled down completely)
- Turn on the cap **3** with fixing clips and tighten it with a open wrench 17 mm.
- Loosen the cap **3** and turn the spindle **2** onto the left.

The illustrations are symbolic and may differ from the respective product. Errors and technical changes reserved.

06/2017