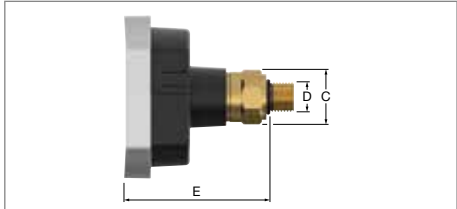
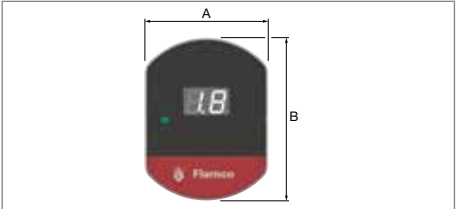
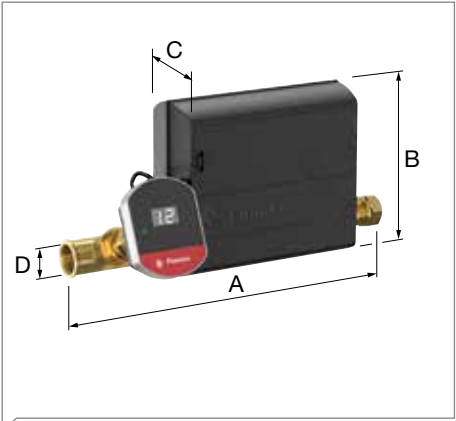


FFlexcon PA - Pressurisation Assistant (23760)



Type	D (")	A (mm)	B (mm)	C (mm)	E (mm)		Order Code
Flexcon PA Pressurisation assistant	1/4	54	71	22	63	1	23760

Flexcon PA AutoFill (23761)



Technical specifications:

- Suitable for heating systems up to 40,000 litres* with expansion vessel and water-glycol mixtures of up to 50%.
- Flow rate (filling): 0.7 m3 / hour.
- Power supply:
Flexcon PA: 5V AC/DC adapter.
Flexcon PA AutoFill: 12V AC/DC adapter.
- Central heating system temperature: 0°C - 90°C.
- Ambient temperature: 0°C - 40°C.
- For working pressure of up to 3.5 bar.
- Design pressure PN6.

Contents of Flexcon PA AutoFill set:

- Flexcon PA (G ¼" M)
- AutoFill unit (G ½" M)
- T-piece (G ½" F)
- Straight fitting (G ½" F)
- Valve (¼" F x ½" M)
- 2x compression fittings nut/ring (15 mm)

* from firmware versie 1.1.1

Related products



T-Plus

For the quick and easy creation of branches in existing systems. With T-Plus the system does not need to be depressurised.

- Order Code 90615 - 90680 (for steel pipe)
- Order Code 90514 - 90542 (for thinwalled steel and copper pipe)



Prescor BFP-EA Back flow protector

Type EA return flow protector suitable for liquid class 2 systems.

- Order Code 27800



Prescor BFP-CA Back flow protector

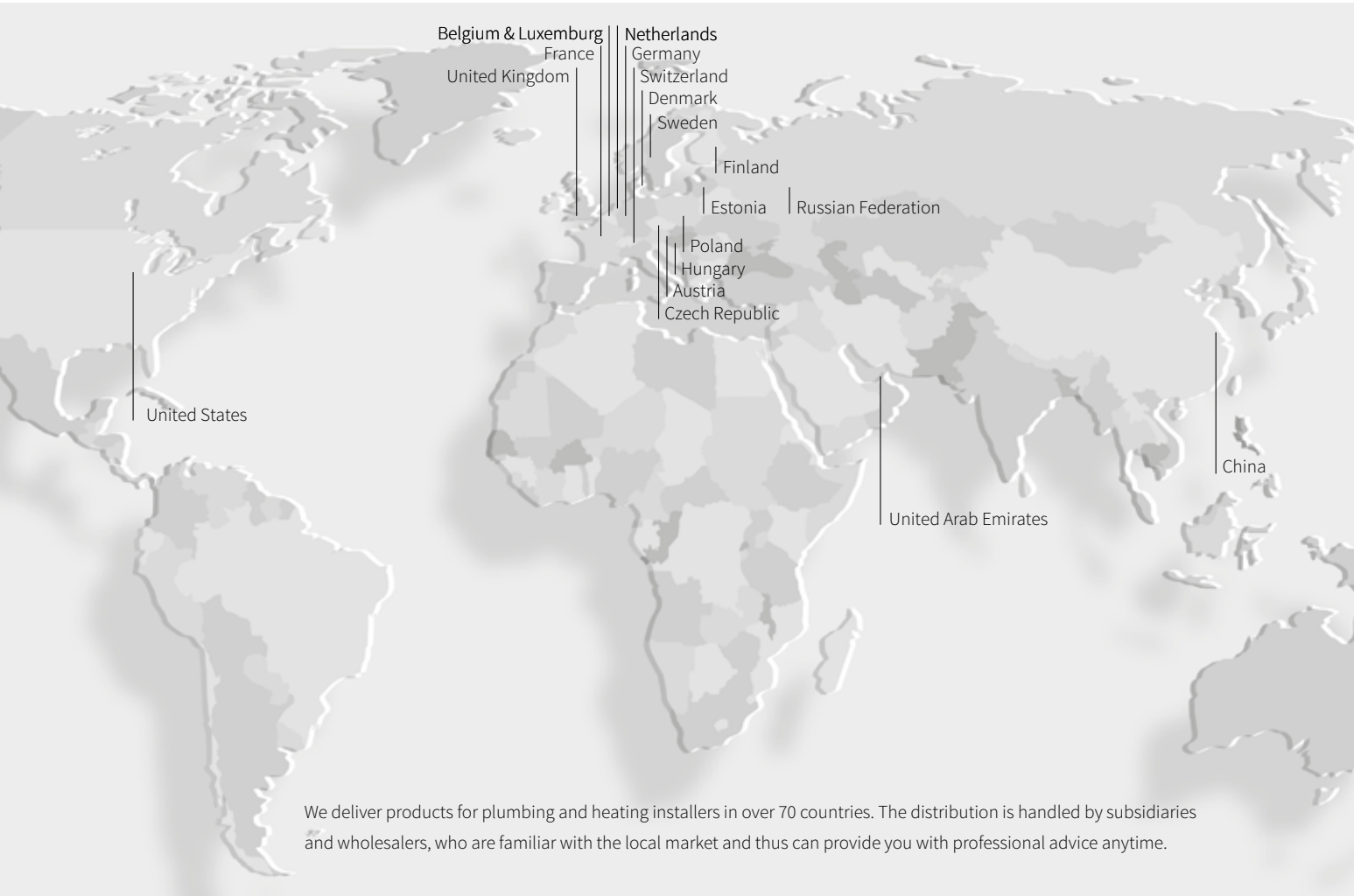
Type CA return flow protection unit suitable for liquid class 3 systems.

- Order Code 27420

Flamco Group
www.flamcogroup.com

Meibes System-Technik GmbH
www.meibes.de

Simplex Armaturen & Systeme GmbH
www.simplex-armaturen.de



Flow of Innovation

United Kingdom
Flamco Limited
Washway Lane
WA10 6PB St. Helens

T +44 17 447 447 44
F +44 17 447 447 00
E info@flamco.co.uk
I www.flamcogroup.com

United Arab Emirates
Flamco Middle East
Jebel Ali
PO Box 262636, Jebel Ali

T +971 4 881 9540
F +971 4 881 9560
E info@flamco-gulf.com
I www.flamco-gulf.com

MC0263/04-2019/eng

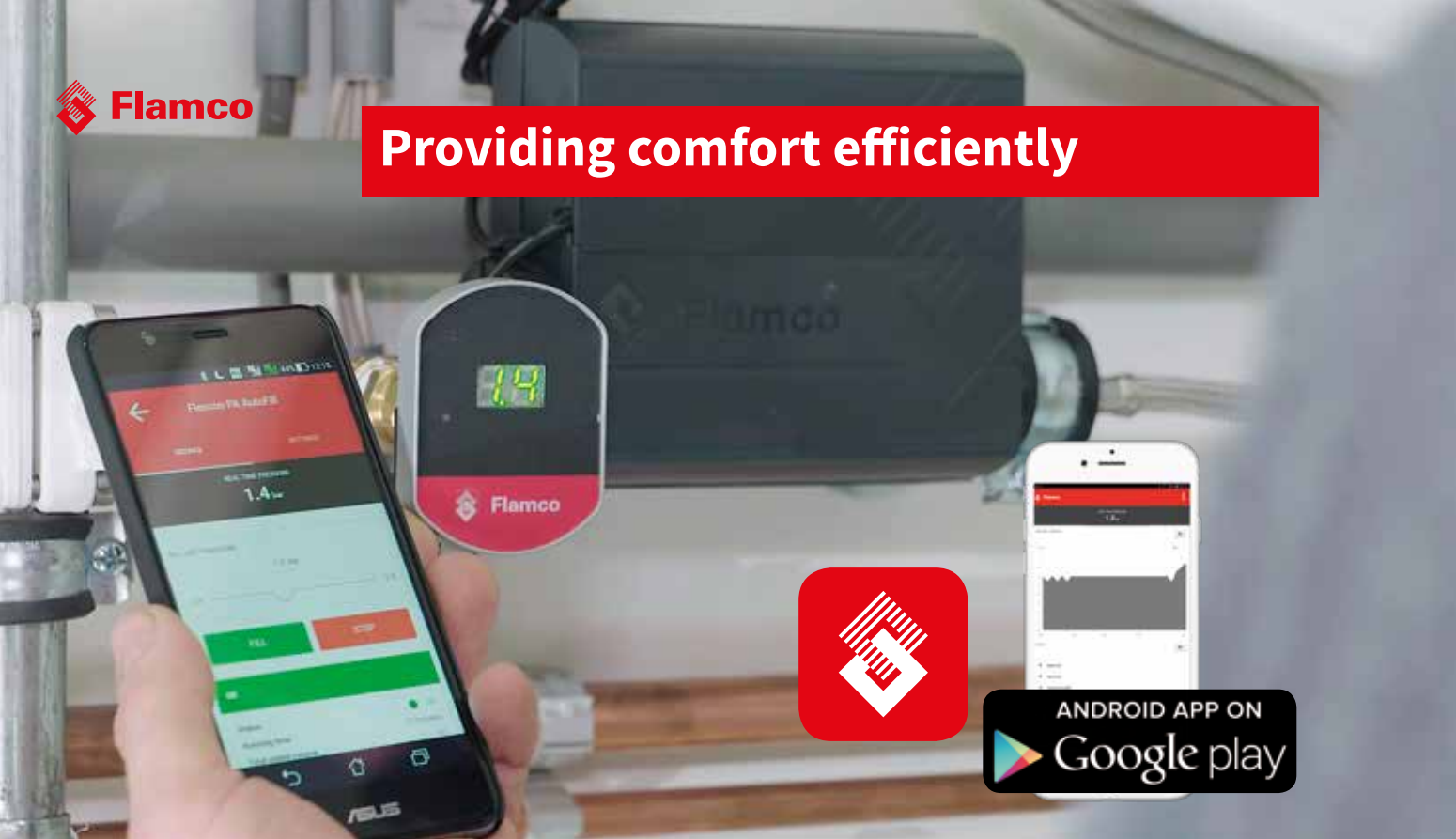


Flexcon PA (AutoFill)
Pressurisation assistant



- Prevents negative pressure-related issues.
- Automatically tops up central heating system (AutoFill).
- Direct reporting of pressurisation.
- Warning of preventive maintenance for the expansion vessel.
- Optimum comfort for the customer.
- Adjustable leak detection (AutoFill).





Flamco

Providing comfort efficiently



ANDROID APP ON
Google play

Professional heating system service companies focus on two things: satisfied customers and efficient business operations. You want to help as many people as possible. The more customers that you can provide with warmth and comfort, the better. The Flamco Flexcon PA is a smart sensor with a mobile App that helps both the installer and end user monitor the pressurisation of central heating systems.

Flexcon PA

The Flexcon PA is connected to an app on a smartphone or tablet. Conveniently, both you and your customers can have access to its display. You can provide remote assistance for your customers without having to travel to their locations just to refill the system with water. While carrying out routine maintenance, you have access to a special service menu with detailed information allowing you to assess the system's condition. If any parts need replacing, this is shown immediately during the service.

“By using the Flexcon PA, the problems with the system have been resolved!”

I was looking for a solution for a system which was giving us water loss problems. They were causing malfunctions and we had to replace critical components, all of which meant incurring significant costs. A person who works for Wasco Apeldoorn recommended Flamco's Flexcon PA to me. I was mainly intrigued by the Flexcon PA's checking and monito-

ring capabilities that allow optimisation of the system. By using the Flexcon PA, the problems with the system have been resolved and further expenses have been spared!

Matthijs Stegeman - Matthijs Klimaattechniek (Climate Technology) Vaassen (NL)

Advantages

- records and sends out an alert when there are problems with the pressurisation.
- assists in topping up of the central heating system so it is always at optimum operational pressure.
- advises on the expected lifespan of the expansion vessel (initial pressure) with having to disconnect it.
- is able to monitor scheduled maintenance intervals for virtually any component in the system.
- comes with an app that shows complete system status, analyses the pressure readings and provides corresponding maintenance advice.
- can be supplemented with an AutoFill unit that fully automates the topping up of central heating systems as well as providing leak detection.

Flexcon PA

Comfort and reliability

Many central heating-system faults can be attributed to insufficient or overdue topping up with water. As a service company, it means you are faced with having to go the customer simply to restore the water level in the system.



The optional Flexcon PA App is handy when initially filling the central heating system. The app provides insight into the central heating system's pressure history.

Many of these emergency call-outs occur outside the regular maintenance contract. Customers subsequently take an unnecessary hit in the wallet due to the travel expenses for which they are then billed.



The Flexcon PA AutoFill monitors the pressure in the central heating system. With a permanent connection to the water pipe, the system is automatically topped up to the required pressure level whenever it drops.



“We expect the Flexcon PA AutoFill saves us a great deal of unscheduled top-up call-outs!”

I work for a technical service in a care home and nursing home organisation with several locations. One of our older systems needs to be topped up quite regularly, including on Sundays and national holidays. To eliminate the need for us to be called out to deal with this kind of job, we decided to fit a Flexcon PA AutoFill. What's more, the log function

gives us a real picture of how often the system is topped up. We expect the Flexcon PA AutoFill to save us a great deal of unscheduled top-up call-outs!

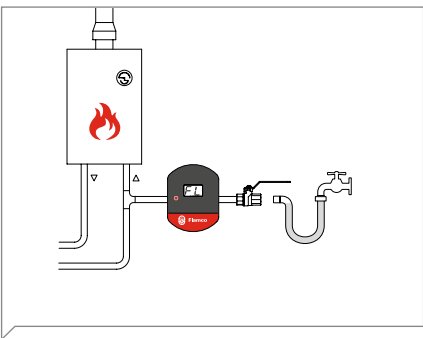
Erik Bouwhuis – Tangenborgh Care Group (NL)

The Personal Assistant for central heating systems

As a service company, you will be involved in the Flexcon PA purchase, installation, reading of the app and, of course, maintenance. When installing the Flexcon PA you can set it up so it knows the minimum system pressure.

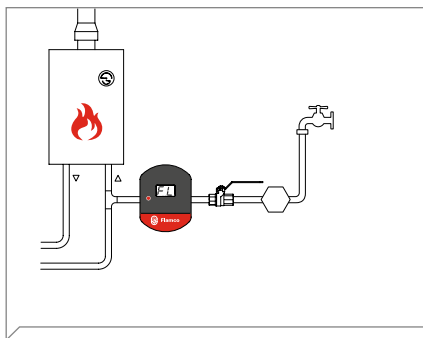
If something goes wrong with system pressure because, for example, the expansion vessel loses initial pressure, the Flexcon PA will send an alert.

Installation can occur in three ways



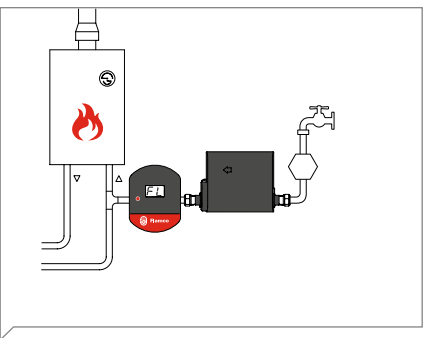
Flexcon PA with app.

The service technician connects the device to the central heating system. When necessary, the customer refills the system by connecting a hose to the central heating system.



Flexcon PA with app and permanent connection to the water pipe.

The service technician installs the device along with an extra water hose, ball valve and return flow protection. To top-up the system, the customer only has to press a button and open the valve.



Flexcon PA AutoFill with app.

The technician installs a fully-automatic unit. Topping up occurs automatically. AutoFill receives a signal whenever the Flexcon PA deems it necessary to refill. The customer does not have to do anything.

List of functions

Function	Flexcon PA 23760	Flexcon PA AutoFill 23761
Filling/topping up assistance	✓	✓
Automatic filling	✗	✓
Expansion vessel check	✓	✓
Safety valve check	✓	✓
Leakage detection	✗	✓
Integrated flow sensor	✗	✓
Permanent water connection	✗	✓
Return flow preventer included	✗	✗
Plug & Play	✓	✓
Works with or without App	✓	✓
App	✓	✓
Real time pressure	✓	✓
Event log	✓	✓
Export data (via E-mail etc.)	✓	✓
Filling via App	✗	✓