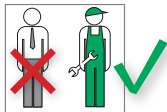


VK 31 Base Board Connection Kit with Press Connection (Profile M and V)



Work on heating and domestic water systems must only be done by qualified professional personnel and in accordance with the respective applicable regulations, guidelines and rules of engineering.



Refer in particular to:

DIN 18 380: Heating systems and central hot water heating systems

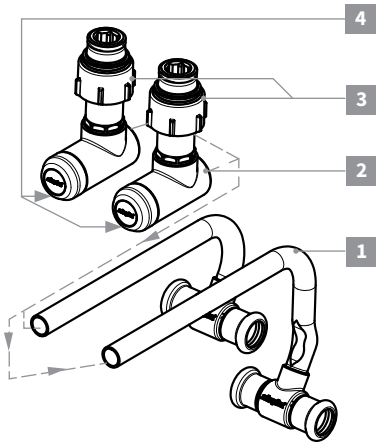
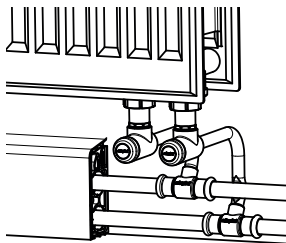
VDI 2035: Scale formation in water heating systems

BGV: German Professional Association Regulations (accident prevention regulations)

(DIN = The German Institute for Standardisation

VDI = Association of German Engineers)





As part of its product liability, Simplex provides a warranty for press connections used with the **VK 31 Base Board Connection Kit with Press Connection** when used with:

- Copper pipes (DIN EN 1057)
- Precision steel pipes (DIN EN 10305-3) made of unalloyed steel
- Stainless steel pipes (DIN EN 10312)

with pipe diameter of 15 mm, 18 mm and 22 mm.

Press jaws with an “M” and “V” profile are permitted.

Assembling the Connection Kit

Important! Absolute adherence to the assembly sequence!

- When installing the VK 31 Base Board Connection Kit with Press Connection **always assemble the return flow first** according to the following steps. Only commence work on the supply flow once the return flow has been installed.
- 1** After assembling the radiator, cut to appropriate length and de-burr the connection pipes of the telescopic angle valve.
- 2** Push the telescopic angle valve onto the connection pipe of the radiator.
- 3** Screw the union nut onto the radiator and tighten it with a spanner wrench 30 mm (use connection nipples for radiators with 1/2" female thread, cone inserts for radiators with 3/4" male thread).
- 4** Remove the protective cap and tighten the compression adapter, integrated in the telescopic angle valve, at the front by utilising a spanner wrench 13 mm.

Important!

Only utilise the valve spindle with Allen key 4 mm for shutting-off the radiator after completion of the installation work.

An incorrect sequence will cause irreparable damage to the spindle and malfunction!

- Make sure that the socket depth is limited by the valve to ensure correct installation of the supply flow and return flow pipe.

- Remove the valve from the radiator again.
- De-burr and calibrate the cut pipes and connect flush with the press connection of the valve.
- Use a suitable pressing machine to press the press connector and fit to the radiator.
- With several radiators on one wall, always assemble the complete connection of the return flow firstly.
Check the direction and axial distance of the supply flow to the return flow – refer to the dimensional drawing on the reverse page.
- Then fit the supply flow (in the same way as the return flow).

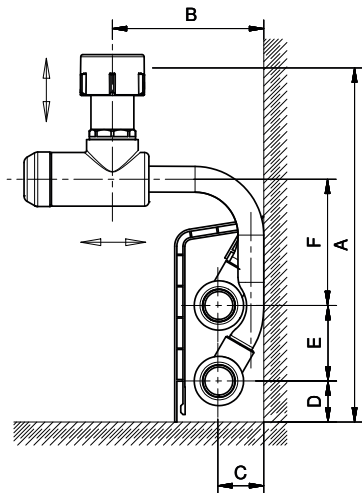
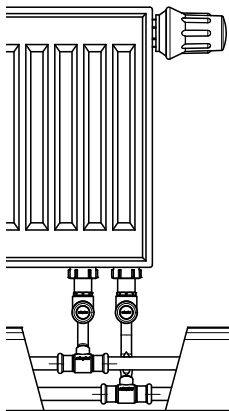
Shutting-off the Radiator

- Remove the protective cap and shut-off the telescopic angle valve at the front by utilising an Allen key 4 mm in a clockwise direction.

Important:

Shut-off the valve spindle (wrench size 4 mm) only after full tightening (clockwise) the integrated compression adapter (wrench size 13 mm).

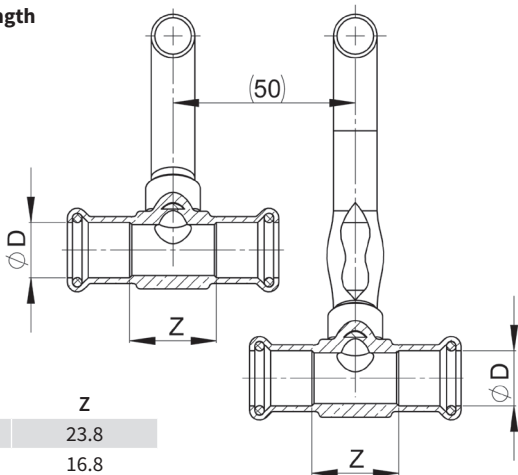
Dimensional Drawings



For radiator with integrated valve with	A*		B*		C	D	E	F
	min.	max.	min.	max.				
Rp 1/2	175	200	50	175	21.5	19	35	59
G 3/4 male	164	189	50	175				

* up to radiator connection (data in mm)

Installation Length (Z-Dimension)



$\varnothing D$	Z
15	23.8
18	16.8
22	20.0

(data in mm)

The illustrations are symbolic and may differ from the respective product.
Errors and technical changes reserved.

02/2019