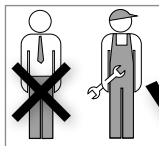
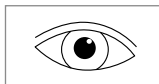


# Reverser for One-pipe system for Reversed Supply and Return Flow

**simplex**



Only allow work on heating and potable water systems to be performed by qualified personnel and in accordance with the respective applicable regulations, guidelines and rules of engineering.



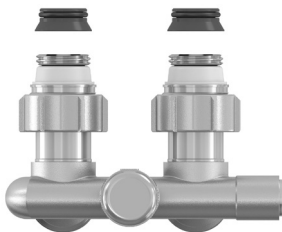
### Refer in particular to:

**DIN 18 380** Heating systems and central hot water supply systems

**VDI 2035** Scale formation in potable water heating systems and water heating systems

**BGV** German Professional Association Regulations  
(accident prevention regulations)

(DIN = The German Institute for Standardisation  
VDI = Association of German Engineers)



## One-Pipe Operation

Resistance inside the valve's bypass can be adjusted by using the throttle spindle **5**. The amount of water flowing through the radiator is determined by increasing (turn right) or decreasing (turn left) the resistance inside the bypass, using the throttle spindle (wrench size 6 mm) in accordance with the diagram on the next page.

By factory default, the valve is set to a radiator supply ratio of 35 %.

## Two-Pipe Operation

When the valve is to be used in two-pipe operation, the throttle spindle **5** must be turned to right until it is fully closed.

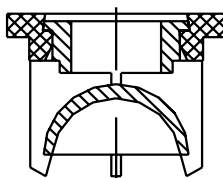
This completely shuts off the bypass.

## Backflow protection

Reduces return heat when the thermostatic valve is closed in one-pipe operation.

### Caution:

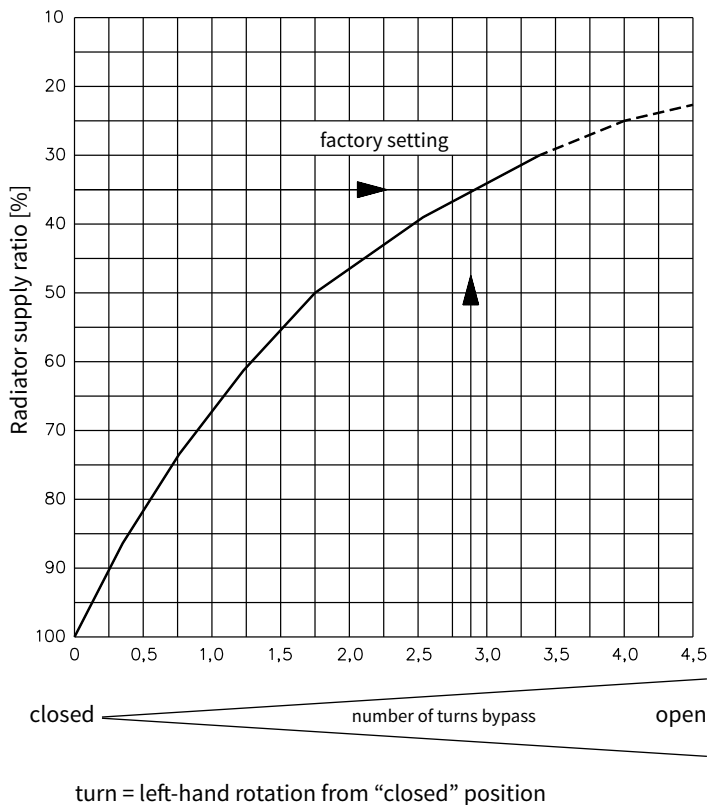
The insert with the backflow protection must always be installed inside the return flow!



By factory default, the backflow protection is installed on the right (= return flow on the right).

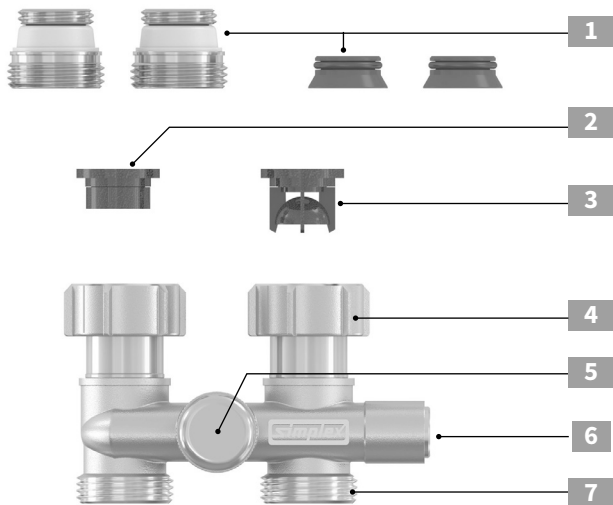
If using return flow on the left: Swap return flow insert **3** and supply flow insert **2**.

## Bypass Presetting



## Reverser for One-pipe System

for radiators with integrated valve with Rp 1/2 female thread or G 3/4 male thread



**1** Connection nipple 1/2" x 3/4" (flat seal) or Cone insert (press into radiator connection)

**2** Supply flow insert

**3** Return flow insert (backflow protection)

**4** Union nut 3/4"

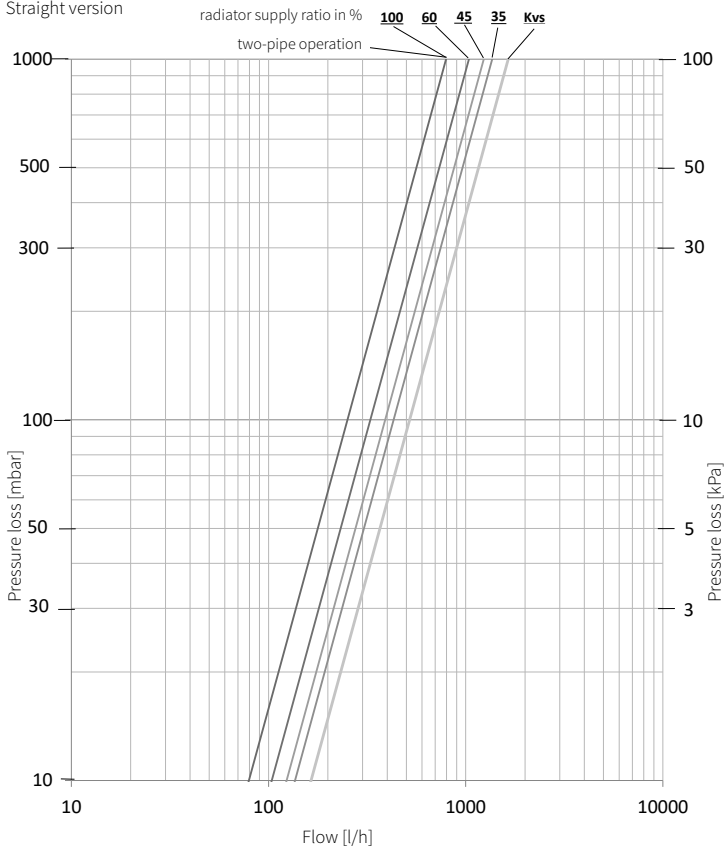
**5** Throttle spindle (Allen key 6 mm)

**6** Radiator shut-off (Allen key 6 mm)

**7** 3/4" male thread (Euro taper)

# Pressure Loss

Straight version



Radiator supply in %	100	60	45	35	25 (kvs)
kv [m <sup>3</sup> /h]	0,80	1,04	1,24	1,36	1,40

The illustrations are symbolic and may differ from the respective product.  
Errors and technical changes reserved.

06/2018

---

**Simplex Armaturen & Systeme GmbH**

D-88260 Argenbühl | Tel. +49 75 66 94 08-0 | Fax. +49 75 66 94 08-75

[www.simplex-armaturen.de](http://www.simplex-armaturen.de)

**6 of 6**